

# Accessories for the ID. Buzz



2023

# ID. Buzz Accessories



Maximum spaciousness meets cutting-edge technology. The ID. Buzz is your trusty companion – equipped with smart features and boasting maximum space. The drive of the future. Complete with matching accessories.

The following vehicle-specific accessories have been specially tailored to your ID. Buzz. Equally as perfectly fitting, but universal, accessories can be found from page 12 onwards.



## Vehicle-Specific Accessories

- 03** Sport and Design
- 04** Transport
- 05** Comfort and Protection
- 08** Wheels
- 09** Product Overview

## Universal Accessories

- 14** Sport and Design
- 16** Communication
- 22** Transport
- 34** Comfort and Protection
- 48** Charging
- 52** Wheels

Refer to the universal section on page 48 for charging systems for your ID. Buzz.



# Sport and Design



**01-03** A good combination of attractive appearance and well-thought-out protection: **Volkswagen Genuine rear lid protection strip** in Black (01) and Grey (02) with an elegant chromed effect and **Volkswagen Genuine aluminium sill panel mouldings** (03). They protect heavily used areas from scratches and paintwork damage. Visual highlight features, complemented by proper protection: a mix that suits your ID. Buzz perfectly. **Volkswagen Genuine load sill protection** in black grained look (not shown) and brushed black (not shown) protects the paintwork during loading and unloading, but also gives your vehicle a distinctive look. It is quick and easy to attach to the load sill of the rear bumper.





01

## NOTE

You will find our roof attachments in the universal accessories section from page 26 onwards.



02

**01-02** You're always best equipped out on the road with made-to-measured Volkswagen Genuine transport solutions. Custom-fit **Volkswagen Genuine roof bars**<sup>1</sup> (01) made of aerodynamically shaped aluminium profiles form the base for the quick and stable fitting of all roof attachments. The **Volkswagen Genuine net partition** (not shown) lets you divide up the passenger compartment and luggage compartment in the ID.Buzz. It is a valuable aid and protection when transporting all kinds of goods. The retrofittable fixed (not shown) or swivelling **Volkswagen Genuine towing bracket** (02) provides the ideal base for transporting bicycle carriers or trailers of all kinds. The required 13-pin **Volkswagen Genuine electrical installation kit** (not shown) needs to be ordered separately.

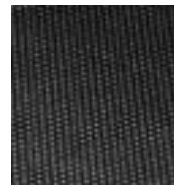
# Comfort & Protection

**01-06** Custom-fit protection for your ID. Buzz can be this easy and versatile. The **Volkswagen Genuine luggage compartment insert** (01) for the ID. Buzz with short wheelbase combines practical benefits, protection, convenience and quality. Its non-slip finish also helps to stop items from sliding around, and it protects the luggage compartment from dirt and moisture. The hard-wearing, durable and made-to-measure **Volkswagen Genuine luggage compartment tray** (02) is the easy way to keep your luggage compartment clean and tidy. The surrounding raised rim reduces the risk of liquids running out into the luggage compartment. The wide-ribbed **Volkswagen Genuine boot liner** (03) is extremely hard-wearing and suitable for anything that tends to make a mess in the load compartment of your ID. Buzz, such as dirty shoes or plants. It is easy-clean, thanks to its smooth plastic finish. The made-to-measure **Volkswagen Genuine reversible floor covering** (04) for the ID. Buzz provides the right surface for any sensitive, dirty or damp goods you need to transport. The robust protective fabric for the load sill can be folded out from the reversible floor covering and is thus effective at preventing scratches when loading and unloading. The practical **Volkswagen Genuine load sill protection** (05) is made of transparent film and prevents damage when loading and unloading. It is simply glued to the load sill of the rear bumper. Rely on high-quality **Volkswagen Genuine sill panel moulding films in black/silver** (06) to protect the heavily used sill panel areas of your vehicle.



## DETAIL

When turned, the sturdy plastic studs on the rear side of the reversible floor covering fix it in place and protect your vehicle from serious dirt and loads.





01

**01-02** Outstanding comfort even on the rear seats. Passengers on the rear bench seat of your ID. Buzz will enjoy summer journeys, thanks to the tailor-made **Volkswagen Genuine sun blind (01)**, as it protects them from direct sunlight. Travel comfortably in all weathers. The extremely hard-wearing **Volkswagen Genuine mudflaps (02)** protect your ID. Buzz and the vehicle behind from flying dirt, dangerous stone impacts, and spray water.



02

## Comfort & Protection



**03-04** In line with the principle "It's what's inside that matters", Volkswagen Accessories also sets great store by protecting the interior of your vehicle. At any time of the year, the hard-wearing **Volkswagen Genuine all-weather floor mats (03)** with ID. Buzz silhouette on the front mats, keep dirt and moisture out of the footwell of your vehicle. The made-to-measure **Volkswagen Genuine "Premium" textile floor mats (04)** made of hard-wearing velour have ID. lettering on the front mats. The mats can be secured to prevent them from slipping, thanks to the securing system and the coating on their rear. Practical **"Plus" rubber floor mats** (not shown) also ensure pleasant cleanliness in the footwell of your vehicle.



# Wheels



## Winter alloy wheels



"Loen", 19, 20-inch  
Black

## Snow chains



"Servo 9", 19-inch

Further accessories for your wheels, including valve caps, wheel bolt locking sets, tyre bag sets and snow chains, can be found in the universal accessories section from page 52 onwards.

The requirements of the current ABE (German type approval) or current certification must be complied with. Please use the standard-fit wheel bolts provided. Please ensure that the load index (LI) of the selected tyres is not lower than the LI specified in the vehicle documents or CoC papers. All winter alloy wheels are treated with an ultra-resistant coating to ensure that they are suitable for use in winter.

The illustration shows: "Loen" alloy wheel on page 08

ID. Buzz Pro: Power consumption in kWh/100 km: combined 18.9; CO<sub>2</sub> emissions in g/km: combined 0; Efficiency class: A+++





# Product Overview **ID. Buzz**



Heading	Page	Article name	ID. Buzz	ID. Buzz Cargo	Article number	Price
<b>Sport and Design</b>	03	<b>Rear lid protective strip</b>				
		- Black	●	●	1T3-071-360-A	
		- Grey	●	●	1T3-071-360	
	03	<b>Aluminium sill panel mouldings</b> , for the front, 1 set = 2x	●	●	1T3-071-303	
	not shown	<b>Load sill protection</b>				
		- Black, grained	●		1T3-061-195	
	- Black, brushed	●		1T3-061-195-A		
<b>Transport</b>	04	<b>Roof bars</b> , 1 set = 2x	●	●	1T3-071-126	
	04	<b>Towing bracket</b> , fitting time approx. 500 TU				
		- Swivelling, low ball position	●	●	1T3-092-161	
		- Swivelling, high ball position	●	●	1T3-092-161-A	
		- Fixed, low ball position	●	●	1T3-092-101-A	
		- Fixed, high ball position	●	●	1T3-092-101	
	not shown	<b>Electrical installation kit for the towing bracket</b> , <sup>1</sup> 13-pin, for vehicles without factory-fitted preparation, approx. fitting time 350 TU				
		- For use with the swivelling towing bracket	●	●	1T3-055-204	
		- For use with the fixed towing bracket	●	●	1T3-055-204-A	
not shown	<b>Net partition</b>	●		1T3-017-221		

<sup>1</sup> For vehicles manufactured from week 27/2022 onwards.

<sup>2</sup> Contact your Volkswagen dealership for information on more country-specific versions.

<sup>3</sup> Emergency charging cables can be used on all Volkswagen electric vehicles. Please contact your Volkswagen dealership for further information about other electric mobility products for your vehicle.

More universal accessories for your ID. Buzz can be found from page 12 onwards.

# Product Overview **ID. Buzz**

Heading	Page	Article name	ID. Buzz	ID. Buzz Cargo	Article number	Price	
<b>Comfort and Protection</b>	05	<b>Luggage compartment tray</b> , for 5-seater vehicles	●		1T3-061-161		
	05	<b>Luggage compartment tray</b>		●	1T3-061-161-B		
	05	<b>Luggage compartment insert</b> , for 5-seater vehicles	●		1T3-061-160		
	05	<b>Boot liner</b> , for 5-seater vehicles	●		1T3-061-162		
	05	<b>Reversible floor covering with load sill protection</b>	●		1T3-061-210		
	05	<b>Sill panel moulding films</b> , Black/Silver, for the front and rear, 1 set = 4x	●	●	1T3-071-310- -ZMD		
	05	<b>Load sill protection film</b> , transparent	●	●	1T3-061-197		
	06	<b>Sun blind</b> , for rear door windows, luggage compartment windows, and rear window	●		1T3-064-365		
	06	<b>Mudflaps</b>					
			- For the front, 1 set = 2x	●	●	1T3-075-111	
			- For the rear, 1 set = 2x	●		1T3-075-101	
			- For the rear, 1 set = 2x		●	1T3-075-101-A	
	07	<b>All-weather floor mats</b>					
			- For the front, with ID. Buzz silhouette, 1 set = 2x	●		1T3-061-502- -82V	
			- For the front, with ID. Buzz silhouette, 1 set = 2x		●	1T5-061-502- -82V	
			- For the rear, 1 set = 1x	●		1T3-061-512-A -82V	
	07	<b>"Premium" textile floor mats</b>					
			- For the front, with ID. lettering, 1 set = 2x	●		1T3-061-275- -WGK	
			- For the rear, 1 set = 1x	●		1T3-061-273- -WGK	
	not shown	<b>"Plus" rubber floor mats</b>					
		- For the front, 1 set = 1x	●		1T3-061-551- -041		
		- For the front, 1 set = 1x		●	1T5-061-551- -041		
		- For the rear, 1 set = 1x	●		1T5-061-510- -041		

<sup>1</sup> For vehicles manufactured from week 27/2022 onwards.

<sup>2</sup> Contact your Volkswagen dealership for information on more country-specific versions.

<sup>3</sup> Emergency charging cables can be used on all Volkswagen electric vehicles. Please contact your Volkswagen dealership for further information about other electric mobility products for your vehicle.

More universal accessories for your ID. Buzz can be found from page 12 onwards.

Heading	Page	Article name	ID. Buzz	ID. Buzz Cargo	Article number	Price
<b>Wheels</b>	08	<b>Winter wheels</b>				
		<b>19-inch "Loen"</b>				
		- Black, 8.0J x 19 ET45 front axle	●	●	1T3-071-499-A -AX1	
		- Black, 9.0J x 19 ET58 rear axle	●	●	1T3-071-499- -AX1	
	08	<b>20-inch "Loen"</b>				
		- Black, 8.0J x 20 ET45 front axle	●	●	1T3-071-490- -AX1	
	- Black, 10.0J x 20 ET58 rear axle	●	●	1T3-071-490-A -AX1		
<b>Snow chains</b>	08	<b>"Servo 9" snow chain, 255/50 R19, 1 set = 2x</b>	●	●	000-091-387-BN	

This table shows the available options with the individual products and our current vehicle models. Please contact your Volkswagen dealership for more information about whether the options can be installed on your particular vehicle. The specified fitting times are guidelines, 100 TU (time units) correspond to one hour. Valid from January 2023.

# Universal **Accessories**



Whether sporty, practical or smart – with the cross-vehicle accessories, you can equip your Volkswagen according to your taste. The cross-vehicle accessories are not model-dependent, but can be used precisely for several models at the same time. As always, in the usual brand quality of Volkswagen Accessories.



## 14

### Sport and Design

- Exterior
- Interior



## 16

### Communication

- Infotainment



## 22

### Transport

- Carrier systems
- Roof attachments



## 34

### Comfort and Protection

- Luggage compartment systems
- Comfort
- Child seats and accessories
- Care and cleaning
- Service
- Vermin repellent



## 48

### Charging

- ID. Charger Travel
- Wall bracket
- Charging connectors
- Emergency charging cable
- Folding box



## 52

### Wheels

- Wheel accessories
- Snow chains



Pick your section of choice



Back to Contents

# Sport and Design





**01-03** Why not show what you have? Give your Volkswagen even more individuality with the large domed **Volkswagen Genuine "Wolfsburg Crest" badge** (01) in high-grade black/chrome. The set includes two badges. **Volkswagen Genuine "Play and Pause" design pedal cap set** (01) with "Play" icon on the accelerator pedal and "Pause" icon on the brake pedal offers special driving fun. It is made of high-quality brushed stainless steel, features a high-quality design, and has a non-slip coating for a good grip. Make a real statement with the **Volkswagen Genuine LED logo light** (03). When you open the front doors, the Volkswagen logo is projected directly onto the ground, providing greater brightness when getting in and out of the car and adds a visual extra.

## Product Overview **Sport and Design**

Heading	Page	Article name	Article number	Price
Exterior	15	<b>"Wolfsburg Crest" badge</b> , universal, 1 set = 2x	5C0-064-317-AS -XRW	
Interior	15	<b>"Play and Pause" design pedal cap set<sup>2</sup></b>	11A-064-205	125,00
	15	<b>LED logo light</b> , only for vehicles with door warning/entry lights, for the front door trim, approx fitting time 25 TU		
		- With the old Volkswagen logo	000-052-120-B	89,00
	- With the new Volkswagen logo	000-052-120-F	105,00	

<sup>1</sup> For electric vehicles only.

This table shows the available options with the individual products and our current vehicle models. Please contact your Volkswagen dealership for more information about whether the options can be installed on your particular vehicle. The specified fitting times are guidelines, 100 TU (time units) correspond to one hour. Valid from January 2023.

# Communication





**01-03** Never lose the connection. High-grade **USB premium connecting cables** (01) can help with this. Use the specially developed cables to connect your smartphone to your Volkswagen's infotainment system, and make use of functions, such as CarPlay™<sup>1</sup> in App-Connect. Your device is charged at the same time. Refer to page 20 for an overview of connector versions and cable lengths. Practical little helpers that make driving more pleasant. The **Volkswagen Genuine DUCI-S** (02) with max. 2 x 18 watts lets you rapidly charge your devices using a USB-A and USB-C port. Simply plug the DUCI-S into the 12 / 24 V socket. The universal **"Smartfit Evolution" smartphone holder**<sup>2</sup> (03) with 3D-ball joint and flexibly adjustable retaining clamps means that your mobile phone is in sight, for navigation and anything else.



<sup>1</sup> "iPhone", "iPod", "iPad", "iPad mini", "iPad Air", Apple Lightning and CarPlay are registered trademarks of Apple Inc. Galaxy Tab is a registered trademark of Samsung Electronics Co. Ltd. Android is a registered trademark of Google Inc.

<sup>2</sup> Do not operate your smartphone while driving.



01

**01** The Volkswagen Accessories **Plug & Play sound system**<sup>1</sup> (01) delivers rich sound into the interior of your vehicle. With a 300-watt sine-wave output and 480 watts of music as well as an impressive range of individual vehicle and driver-specific set-ups for the ultimate audio experience. Available for the spare wheel well.

<sup>1</sup> Please enquire at your Volkswagen dealership whether the options can be installed on your particular vehicle.

# Communication



02



03



04

**02-06** The **App-Connect activation document<sup>1</sup> for MIB Standard and MIB2 Entry (02-03)** brings MirrorLink™, Apple's CarPlay™<sup>2</sup> function, and Google's Android™<sup>2</sup> function to the touchscreen of your Volkswagen infotainment system for vehicles from model year 2016 onwards. The **Dynamic Road Sign Display activation document<sup>1,3</sup> (04)** ensures that road signs can be recognised by the front camera. Up to three road signs are displayed on the instrument cluster and/or on the display of your navigation system. Following activation using the **Volkswagen Genuine voice control activation document<sup>1</sup> (05)**, you can control the phone and radio features of the Composition Media radio, and also operate the Discover Media navigation system without taking your hands from the steering wheel. The **DAB+ extension<sup>1</sup> (06)** gives you digital radio reception with additional functions and texts in your Volkswagen – conveniently operated using the existing audio system and multifunction display. Simply connect external audio sources to listen to your own choice of tracks. The DAB+ extension is installed almost invisibly in the dash panel.



05



06

<sup>1</sup> Please enquire at your Volkswagen dealership whether the options can be installed on your particular vehicle.

<sup>2</sup> "iPhone", "iPod", "iPad", "iPad mini", "iPad Air", Apple Lightning and CarPlay are registered trademarks of Apple Inc. Galaxy Tab is a registered trademark of Samsung Electronics Co. Ltd. Android is a registered trademark of Google Inc.

<sup>3</sup> Please note the camera's limited field of vision and the limits of the system. Please follow the information in the vehicle wallet precisely.

# Product Overview **Communication**

Heading	Page	Article name	Article number	Price
Infotainment	17	<b>USB premium connecting cable<sup>1</sup></b> , universal		
		- USB-C to Micro-USB 30 cm	000-051-446-AB	
		- USB-C to Apple Lightning 30 cm	000-051-446-AC	
		- USB-C to USB-C 30 cm	000-051-446-AD	
		- USB-C to USB-A port 30 cm	000-051-446-AE	
		- USB-C to Micro-USB 70 cm for MIB2 Standard navigation	000-051-446-BA	
		- USB-C to Apple Lightning 70 cm	000-051-446-BB	
		- USB-C to USB-C 70 cm	000-051-446-BC	
		- USB-C to USB-A port 70 cm	000-051-446-BD	
	not shown	<b>DUCI dual USB charging adapter</b> , for vehicles with factory-fitted 12 V cigarette lighter socket	000-051-443-D	
	17	<b>DUCI-S charging adapter</b> , for vehicles with factory-fitted 12 V or 24 V socket	000-051-443-F	
	17	<b>"Smartfit Evolution" smartphone holder</b> , can be rotated 360°, with suction cup fixing	000-051-435-AF	
	18	<b>Plug &amp; Play sound system<sup>2</sup></b> , for the spare wheel well, installation time approx. 150 TU, for the Polo, T-Cross, T-Roc, Touran, Tiguan, Tiguan Allspace, Arteon, Golf and Passat	000-051-419-B	

<sup>1</sup> Use depends on the vehicle equipment.

<sup>2</sup> For vehicles up to model year 2020.

<sup>3</sup> Please note the camera's limited field of vision and the limits of the system. Please follow the information in the vehicle wallet precisely.

<sup>4</sup> Only in conjunction with the Composition Media radio or Discover Media navigation function. Please talk to your Volkswagen dealership about compatibility.

Heading	Page	Article name	Article number	Price
	19	<b>App-Connect activation document</b> for the Golf Sportsvan, Polo, Sharan, T-Cross, T-Roc, Tiguan Allspace, Touareg, Touran, installation time approx. 30 TU		
		- For MIB2 Standard	5G0-054-830-A	
		- For the MIB2 Entry	5G0-054-830-B	
	19	<b>Dynamic Road Sign Display activation document<sup>3</sup></b> , for MIB2 Standard navigation	5G0-054-809-A	
	19	<b>Voice control for radio/navigation<sup>4</sup></b> , installation time approx. 30 TU for the Polo, T-Cross, T-Roc, Golf Sportsvan, Touran, Tiguan Allspace, Sharan		
		- For the "Composition Media" radio	5G0-054-802	
		- For the "Discover Media" navigation function	5G0-054-802-A	
	19	<b>DAB+ extension</b>		
		- For RCD510, RNS315/510	000-063-212-B	
		- For RCD310	000-063-212-C	
		- For MIB Standard / MIB High Gen 1 & Gen 2	000-063-212-E	

This table shows the available options with the individual products and our current vehicle models.  
Please contact your Volkswagen dealership for more information about whether the options can be installed on your particular vehicle.  
The specified fitting times are guidelines, 100 TU (time units) correspond to one hour. Valid from January 2023.

# Transport



**01-04** Volkswagen Accessories gives you the freedom to simply and conveniently take your bicycles with you. There is a wide range of bicycle carriers for the towing bracket to suit almost every requirement. The lightweight **Volkswagen Genuine "Premium" bicycle carrier** (01) will impress with its easy installation with lever-free IQ quick-release fastening system, large 90° opening angle (02) and compact storage dimensions (03). It is suitable for transporting two bicycles or electric bikes. The divisible **Volkswagen Genuine loading ramp** (01) helps to conveniently load and unload bikes to and from all Volkswagen Genuine bicycle carriers. A storage bag is included. The lightweight and compact folding **Volkswagen Genuine "Compact II" bicycle carrier** (pictured on page 24) carries two bikes or electric bikes and can conveniently be folded down using a large foot pedal to ensure that the boot lid remains accessible. Also available as the **Volkswagen Genuine "Compact III" bicycle carrier**<sup>1</sup> (pictured on page 25) for three bicycles. A handy **transport bag** (04) to protect the bicycle carriers is also included. The extendible **Volkswagen Genuine "Basic Flex" bicycle carrier** (pictured on page 25) for the towing bracket is suitable for transporting up to two electric bikes or two or three regular bikes. Thanks to the extra-large folding angle (90°), the load compartment can also be opened even with vehicles with large boot lids. The extension set for a third bicycle means that it can be flexibly adapted to your needs. The **Volkswagen Genuine "Basic" bicycle carrier** (pictured on page 25) for the transport of two bicycles or electric bicycles impresses with its low weight even under maximum load. It can be completely folded together and compactly stowed away.



01



02

## SPECIAL FEATURES

**90° folding function:** The foot pedal enables the Volkswagen Genuine "Premium" and "Basic Flex" bicycle carriers to be folded out extra wide (02) so that the luggage compartment can still be accessed, even with models with boot lid.

## TRANSPORT

Volkswagen Genuine "Premium" and "Basic" bicycle carriers can be compactly transported in the spare wheel well of the Golf 7, Golf 7 Estate, Golf 8, Golf 8 Estate, Golf Sportsvan, Passat 8 Estate, Passat 8 Saloon and T-Roc. We recommend using the optional fixing kit (not shown).



03

The bicycle carrier folds down completely (03) for compact storage or to be stowed away in the luggage compartment.



04

The transport bag (04) is included with the "Compact II/III" bicycle carriers. The transport bag is available as an option for the "Premium" and "Basic" bicycle carriers.

<sup>1</sup> Also suitable for transporting up to two electric bikes.

# Bicycle carriers at a glance

## NOTE

Please note the drawbar load of the vehicle-specific towing bracket.

The standardised factory-fitted FIX4BIKE connection can be used to attach your Volkswagen bicycle carrier to the towing bracket. This does not increase the payload.



Bicycle carriers for the towing bracket

Model	"Premium"	"Compact II"
Number of bicycles	2	2
Own weight [kg]	13	14
Max. load [kg]	60	60
Bicycle rail spacing	220 mm	220 mm
Wheel rail width	65 mm	55 mm
Max. axle spacing	1300 mm	1250 mm
Bicycle frame diameter	up to 75 mm round tube or 75 x 45 mm oval tube	up to 80 mm round tube or 80 x 45 mm oval tube
Dimensions [H x W x D] in cm	69 x 118 x 56	76 x 114 x 65
Folded dimensions [H x W x D] in cm	20 x 61 x 60	24 x 58 x 64
Max. bicycle tyre width	2.8"	2.8"
Suitable for electric bikes	●	●
Foot pedal-activated folding function (also with bicycles)	●	●
Anti-theft protection, lockable	●	●
Number plate carrier with handle	●	●
Plug connection, 13-pin	●	●
Transport bag included in the scope of delivery	○	●
Removable frame carrier	●	○
Optional accessories	Loading ramp, transport bag, mounting kit	Loading ramp
Optional equipment	<ul style="list-style-type: none"> <li>- Lever-free assembly</li> <li>- Can be transported in the spare wheel well of certain vehicles</li> <li>- Large 90° folding angle, also for vehicles with large boot lids</li> </ul>	





"Compact III"	"Basic Flex"	"Basic"
3	2 (3 with optional extension)	2
16	14	12
54	60	60
190/180 mm	220 mm	220 mm
55 mm	55 mm	65 mm
1250 mm	1250 mm	1300 mm
up to 80 mm round tube or 80 x 45 mm oval tube	up to 75 mm round tube or 75 x 45 mm oval tube	up to 75 mm round tube or 75 x 45 mm oval tube
76 x 114 x 79	77 x 115 x 65	67 x 118 x 56
24 x 58 x 77	non-folding	20 x 61 x 60
2.8"	2.8"	2.8"
●	●	●
●	●	○
●	●	●
●	●	●
●	●	●
●	○	○
○	●	●
Loading ramp	Extension kit for a third bicycle, loading ramp	Loading ramp, transport bag, mounting kit
	- Large 90° folding angle, also for vehicles with large boot lids	- Lever-free assembly - Can be transported in the spare wheel well of certain vehicles

# Bicycle holder at a glance



01

## NOTE

Please observe the maximum permissible roof load.

**01** There's now something on top – in a positive sense. The **Volkswagen Genuine bicycle holder (01)** lets you transport your bicycles in a stable manner on the roof of your Volkswagen. The innovative torque limiter rotary knob controls the torque on the bicycle frame. The roof bars or cross bars provide the base for this.



Bicycle holder for the vehicle roof

Model	Bicycle holder
Max. number of bicycles	1
Own weight [kg]	4.2
Max. load [kg]	20
Bicycle mount	Frame/wheel
Bicycle frame diameter	22-80 mm round tube / 80 x 100 mm oval tube
Suitable for tyre widths	3"
Compatible with quick-release axles	all
Dimensions [L x W x H] in cm	145 x 32 x 9
Adjustable quick-release clamp for wheels	●
Lockable: bicycle on the bicycle carrier and carrier on the roof bars/ cross bars	●
Suitable for bicycles with disc brakes	●
Suitable for roof carriers with 20 x 20 mm T-grooves	●
Suitable for roof carriers with square profiles	○
Other	<ul style="list-style-type: none"> <li>- Rotary knob with integrated torque limiter for fast and easy attachment of the bicycle frame</li> <li>- Can be attached to the vehicle roof facing either direction</li> <li>- Easily moved without tools</li> </ul>



#### PRACTICAL

Thanks to the practical pull-out function, the ski and snowboard holder is easy to load and unload.

#### NOTE

Please observe the maximum permissible roof load.



**01-02** Off to the slopes. The lockable **Volkswagen Genuine "Comfort" ski and snowboard carrier (01)** with pull-out function lets you transport your valuable skis or wakeboard conveniently on the roof of your Volkswagen. Also available as the **Volkswagen Genuine "Basic" ski and snowboard carrier** (not shown) without pull-out function. The roof bars or cross bars provide the base for this. The practical **Volkswagen Genuine ski bag (02)** helps to protect up to four pairs of skis and poles when transported in a roof box or secured by a seat belt in the interior of the vehicle.





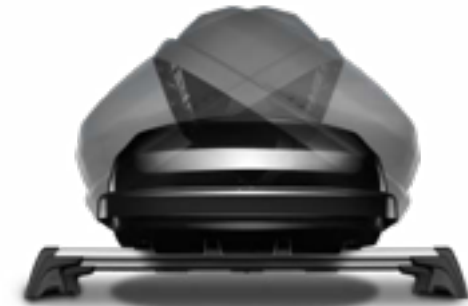
**03-04** Leisure time is calling – and Volkswagen Accessories has the right transport solutions for it. The **surfboard carrier** (03) transports your surfboard and its two-piece mast safely to its destination. Thanks to its movable rubber supports, the **Volkswagen Genuine kayak holder** (04) ensures a non-slip and judder-free transport of any kayak weighing up to 25 kg.



# Roof boxes at a glance



Model	Volkswagen Genuine "Comfort 340" roof box	Volkswagen Genuine "Comfort 460" roof box	"Basic 340" roof box
Colour	Black, gloss	Black, gloss	Black, matt
Max. volume [l]	340	460	340
Length, external [mm]	1900	2300	1900
Height [mm]	390	390	390
Width [mm]	750	750	750
Own weight [kg]	19	21	19
Load capacity [kg]	75	75	50
Mounting system	Pre-assembled quick-release mechanism in T-groove rail	Pre-assembled quick-release mechanism in T-groove rail	T-groove rail



**NOTE**

And the innovative DuoLift system enables the roof box to be opened from both sides (applies to the "Comfort 460" roof box).

Please observe the maximum permissible roof load.

"Basic 460" roof box	"Urban Loader" roof box
Black, matt	Black, matt
460	300-500 (variable)
2300	1408
390	259-517 (variable)
750	886
21	15
75	50
T-groove rail	U-shaped bracket

In vehicles with rod aerials, the aerial may come into contact with the roof box depending on the vehicle model and aerial length. The aerial may have to be unscrewed if necessary. Depending on the vehicle configuration or model selection, the roof box may collide with the boot lid when open due to the different lengths. Please note the vehicle-dependent loads.

# Product Overview **Transport**

Heading	Page	Article name	Article number	Price
<b>Carrier systems</b>	23	<b>"Premium" towing bracket bicycle carrier</b> <sup>1,2,3</sup> , folding, for two bicycles	000-071-105-J	
	23	<b>Loading ramp</b> , a loading aid for the "Premium", "Basic Flex", "Compact II", "Compact III" and "Basic" bicycle carriers	000-071-123	
	23	<b>"Compact III" towing bracket bicycle carrier</b> <sup>1,3,4</sup> , folding, for two bicycles	3C0-071-105-B	
	23	<b>"Compact III" towing bracket bicycle carrier</b> <sup>1,3,4</sup> , folding, for three bicycles	3C0-071-105-C	
	23	<b>"Basic Flex" towing bracket bicycle carrier</b> <sup>1,3</sup> , folding, for two bicycles	000-071-105-G	
	23	<b>"Basic Flex" extension kit</b> <sup>1</sup> , for a third bicycle	000-071-109-B	
	23	<b>"Basic" towing bracket bicycle carrier</b> <sup>1,2,3</sup> , for two bicycles	000-071-105-K	
	23	<b>Transport bag</b> for the "Basic" and "Premium" bicycle carriers	000-071-226-A	
	not shown	<b>Mounting kit for the "Premium" and "Basic" towing bracket bicycle carriers</b>	000-071-705-A	
	<b>Roof attachments</b>	26	<b>Bicycle holder</b> <sup>5</sup> , for one bike, max. load 20 kg	000-071-128-F
28		<b>Ski and snowboard carrier</b> <sup>5</sup>		
		- "Comfort", for four pairs of skis or two snowboards or one wakeboard, with pull-out function	000-071-129-AB	
		- "Basic", for four pairs of skis or two snowboards	000-071-129-M	
		- "Basic", for six pairs of skis or four snowboards	000-071-129-N	

<sup>1</sup> For a detailed overview of the weights, load capacities and dimensions, please see page 24.

<sup>2</sup> Foldable for transport in the spare wheel well: Golf 7, Golf 7 Estate, Golf 8, Golf 8 Estate, Golf Sportsvan, Passat 8 Estate, Passat 8 Saloon and the T-Roc.

<sup>3</sup> Not suitable in conjunction with a towing brackets with aluminium ball head.

<sup>4</sup> Transport bag included.

<sup>5</sup> Only for use with roof bars or cross bars. Please observe the maximum permissible roof load.

<sup>6</sup> For a detailed overview of the weights, load capacities and dimensions, please see page 30.

This table shows the available options with the individual products and our current vehicle models. Please contact your Volkswagen dealership for more information about whether the options can be installed on your particular vehicle. The specified fitting times are guidelines, 100 TU (time units) correspond to one hour. Valid from January 2023.



Heading	Page	Article name	Article number	Price
	28	<b>Ski bag</b>	00V-061-202	
	29	<b>Surfboard holder<sup>5</sup></b> , for one surfboard with a two-piece mast	000-071-120-HA	
	29	<b>Kayak holder<sup>5</sup></b> , for one kayak up to 25 kg	1K0-071-127-A	
	30	<b>"Comfort" roof box<sup>5,6</sup></b> , load capacity: 75 kg, high-gloss black		
		- "Comfort 340", dimensions: 1900 x 750 x 390 mm (L x W x H), volume: 340 l, weight: 19 kg	000-071-200-AD	
		- "Comfort 460", dimensions: 2300 x 750 x 390 mm (L x W x H), volume: 460 l, weight: 21 kg	000-071-200-AE	
	30/31	<b>"Basic" roof box<sup>5,6</sup></b> , black, matt		
		- "Basic 340", dimensions: 1900 x 750 x 390 mm (L x W x H), volume: 340 l, weight: 19 kg, load capacity: 50 kg	000-071-200	
		- "Basic 460", dimensions: 2300 x 750 x 390 mm (L x W x H), volume: 460 l, weight: 21 kg, load capacity: 75 kg	000-071-200-AC	
	31	<b>"Urban Loader" roof box<sup>5,6</sup></b> , black, matt, load capacity: 50 kg	000-071-200-AF	

This table shows the available options with the individual products and our current vehicle models.  
Please contact your Volkswagen dealership for more information about whether the options can be installed on your particular vehicle.  
The specified fitting times are guidelines, 100 TU (time units) correspond to one hour. Valid from January 2023.

# Comfort and Protection



# Comfort and Protection



**01-02** The **Volkswagen Genuine luggage compartment plug-in module<sup>1</sup>** (01) lets you flexibly partition your vehicle's luggage compartment, preventing objects from sliding around. Small and mid-sized objects remain fixed in their place, thanks to the tearresistant **Volkswagen Genuine luggage net<sup>1</sup>** (02).



<sup>1</sup> Refer to page 44 for an overview of all models. Please enquire at your Volkswagen dealership whether the options can be installed on your particular vehicle.



**01-03** The energy-efficient (A++) **Volkswagen Genuine cool and thermos box** (01) holds approximately 25 litres, and helps to keep snacks and drinks at a perfect temperature during the journey. The box connects to a 12 V/230 V socket in the car or home. A tidy matter. Quickly get rid of candy wrappers and chewing gum papers and prevent them from flying around the inside of your Volkswagen in the **Volkswagen Genuine waste container** (02) for the drink holder. A tidy house, a tidy mind, a tidy Volkswagen. The **Volkswagen Genuine "Clean Solution" waste bag** (03), which attaches to the headrest struts of the front seats, can help to keep the interior of your vehicle clean and tidy. When a bag is taken out, a new one is automatically pulled into place.



# Comfort and Protection



04

**04-05** The energy-efficient **Volkswagen Genuine LED reading lamp** (04) with adjustable swan neck and Volkswagen logo lets your passengers enjoy a comfortable and glare-free light when travelling in the dark. The lamp is connected to the cigarette lighter or a 12 V socket. The speed of your Volkswagen can be simply maintained at the press of a button with the **Volkswagen Original cruise control system**<sup>1</sup> (05). A maximum speed can be fixed using the additional Speed Limiter function, which is then not exceeded, even at full acceleration.



05

<sup>1</sup> Gradients and slopes may affect the performance of the cruise control system. Please take system limits into account.

## NOTE

One base, so many options: all the different modules can be mounted easily onto the base holder and flexibly swapped as required.



Keen to learn about even more clever ideas? No problem. The modular **travel and comfort system** enhances comfort for child and adult passengers in the passenger compartment. Tablet holders for various models and the folding table<sup>1</sup> provide a host of new possibilities for passing the time. The bag hook<sup>2</sup> and clothes hanger<sup>2</sup> may be the most convenient ways of transporting your belongings with care when no one is sitting on the rear bench seat.

- 01 Base module
- 02 Folding table with drink holder<sup>1</sup>
- 03 Clothes hanger<sup>2</sup>
- 04 Bag hook<sup>2</sup>
- 05 Action camera holder<sup>3</sup>

- 06 Tablet holder for Apple iPad 2-4<sup>4</sup>  
Tablet holder for Apple iPad Air 1-2<sup>4</sup> (similar to the illustration)
- 07 Tablet holder for Apple iPad mini 1-3<sup>4</sup>
- 08 Tablet holder for Samsung Galaxy Tab 3/4<sup>4</sup> 10.1"



<sup>1</sup> The folding table with drink holder needs to be folded away during your journey if a person is sitting on the rear bench seat behind it.

<sup>2</sup> Only usable if a passenger is not seated on the rear bench seat behind it.

<sup>3</sup> This function depends on the infotainment system in your vehicle. Please observe the notes in your vehicle wallet. Never watch recordings when driving.

<sup>4</sup> "iPhone", "iPod", "iPad", "iPad mini", "iPad Air", Apple Lightning and CarPlay are all registered trademarks of Apple Inc.

Galaxy Tab is a registered trademark of Samsung Electronics Co. Ltd. Android is a trademark of Google Inc.

# Comfort and Protection

## NOTE

The swivelling, lockable arm and 360° rotating bracket with marked degree intervals make it easy to align the camera with the area you wish to view.



## NOTE

Complete flexibility: The swivelling axle lets you use the tablet in both portrait and landscape modes.

# Child seats at a glance



Rest assured. Your most precious treasures are well secured and sitting comfortably on board in our child seats – from babies onwards. Four thoroughly tested Volkswagen Genuine child seat models are available, some with innovative SecureGuard technology.

## NOTE

Thanks to the base station's practical rotation function, the seats can be rotated 90° in both directions.



**01-02** With the innovative Volkswagen Genuine Child Seat System, you receive a high level of comfort and flexibility for the well-secured transport of your little ones from birth to 15 months (approx. 83 cm / 13 kg). The system consists of the **Volkswagen Genuine "Flex Base i-SENSE"** base station (01) and the specially designed **Volkswagen Genuine "i-SIZE" infant carrier** (02). Once the base station has been attached to the vehicle, the Volkswagen Genuine "i-SIZE" infant carrier can be easily installed and removed again with just one click, with or without the sun shade. Thanks to its practical 90° rotating function, placing and strapping in, or unstrapping and lifting out your baby literally becomes child's play. When the vehicle is moving, the infant carrier faces backwards. In addition to the rotation function, the base station can also be adjusted to one of four tilting angles. A number of safety functions, like the 5-point belt system, make sure that your baby is secure and comfortable when you're on the road.

## NOTE

A matching Volkswagen Genuine seat cover for underneath is listed on page 45.



# Comfort and Protection

## NOTE

Thanks to the base station's practical rotation function, the seats can be rotated by 360°.



03



04



05



06

**03** The **Volkswagen Genuine "Dualfix i-SIZE"** is suitable for newborns and toddlers up to the age of four years (approx. 105 cm/18 kg). Thanks to the 360° rotation function, the seat can face both forwards and backwards. You are recommended to use the backwards-facing position to transport your child for as long as possible. With six seat positions and a number of adjustment options, the seat grows with your child, making it useful for many years. Thanks to innovative safety functions, like the SICT side collision protection or the Pivot Link ISOFIX system, your young passenger is well protected, even in the event of an accident.

**04** The **Volkswagen Genuine "TRIFIX i-SIZE"** is the first child seat after the infant carrier, because it is suited to the needs of children between approx. 76 and 105 cm. Thanks to the built-in ISOFIX and Top Tether fittings, it is easy and convenient to install. The enhanced seat cushion ensures that your child has enough space while they grow – from 15 months to around four years old (approx. 76-105 cm / up to 18 kg). A total of four adjustable positions offer a high level of comfort for your little ones. Thanks to innovative safety functions, like the SICT side collision protection, the V-shaped head restraint and the Pivot Link ISOFIX system, impact forces are cushioned in the event of an accident – after all, your child's safety is always the number one priority. The ISOFIX connectors are integrated directly into the "TRIFIX i-SIZE" and leave the infant carrier and base free for little brothers or sisters.

**05-06** Your children aged 3½ to 11 years (approx. 100-150 cm / 15 to 36 kg) can enjoy comfortable and safe journeys in the **Volkswagen Genuine "KIDFIX i-SIZE"** (05). Thanks to the soft, padded fabric cover and the ventilation holes in the seat, your little ones will enjoy a comfortable temperature during every journey. And with its various safety features, such as the special seat frame, the optimised seat belt guides at the top and bottom, and the padded head restraint, your child is well secured and also very comfortable. Another feature is the innovative SecureGuard, which provides protection to your child's stomach thanks to an additional fourth seat belt fastening. The backrest can be removed for greater flexibility for children over approx. 138 cm. For safety reasons, however, the backrest should remain attached to the seat for as long as possible. Thanks to the seat's slim design, up to three KIDFIX i-SIZE seats can be installed next to one another, depending on the vehicle. The child seat is also available in a sporty GTI version (06) – with the same high standard of comfort and protection.



01



06

07



02



03



04



05



08

**01 Volkswagen Genuine care and cleaning products** were developed to work perfectly together in and on the vehicle. For long-term, effective vehicle care to protect both the material and the environment. Please refer to page 45 for more information on the individual products, as well as our seasonal care and cleaning sets.

**02 The Volkswagen Genuine first aid kit** meets the legal requirements of section 35h of the German Road Traffic Licensing Regulations and DIN 13 164, and is ideal in the event of an emergency.

**03 The "Evolution" emergency hammer** with seat belt cutter and ceramic hammer head gives you the good feeling of being able to help yourself in an emergency.

**04 Bid farewell to ice and snow with the Volkswagen Genuine ice scraper**, and free your Volkswagen from wintry obstacles in an instant. Also available as a version with telescopic rod or snow brush.

**05 This clever-designed Volkswagen Genuine warning triangle** is ECE-certified, requires minimal storage space, and can be set up easily and quickly thanks to its swivelling metal foot.

**06 The Volkswagen Genuine breakdown assistance safety package** comes into its own in the event of a breakdown. It contains a useful selection of products in a durable bag.

**07 The Volkswagen Genuine fire extinguisher** containing 1 kg of extinguishing powder ensures that you are well prepared in the event of an emergency, such as a vehicle fire. A **holder** to securely fix it in the footwell is available separately.

**08 Absolutely necessary and legally prescribed:** the orange-coloured and fluorescent **Volkswagen Genuine high-visibility waistcoat**<sup>1</sup> with Volkswagen lettering and reflective signal stripes.

<sup>1</sup> As of 1 July 2014, all drivers in Germany are required by law to carry a high-visibility waistcoat in their vehicle – with the exception of motorbikes and mobile homes – and in other European countries, a high-visibility waistcoat must be carried for all vehicle passengers.

# Comfort and Protection



**09** The innovative solution for cleanliness you can feel. The refillable **Volkswagen Genuine display cleaner 2-in-1** combines a cleaning spray and microfibre cloth, and comes in a range of colours. Simply practical! The display cleaner can be refilled and re-used again and again. Good for the environment and your wallet.



**10** Small animals – big impact. If rodents chew on a vehicle's ignition cables or electric systems, they can leave it at risk of breaking down, leading to expensive repairs. Prevent these pests in advance with effective **vermin repellent** products – from preventively effective deterrent spray<sup>1</sup> to electronic products. Refer to page 47 for an overview of all products.



<sup>1</sup> Use vermin repellent spray safely. Always read the label and product information before use.

# Product Overview **Comfort and Protection**

Heading	Page	Article name	Article number	Price	
<b>Luggage compartment systems</b>	35	<b>Luggage compartment plug-in module</b>			
		- For the Golf Sportsvan, Tiguan, Tiguan Allspace	000-061-166		
			- For the ID.3, ID.4, T-Cross, T-Roc, Golf, Golf Alltrack, Passat Estate, Passat Alltrack, Polo, Touareg	000-061-166-A	
	35	<b>Luggage net</b> , for the lashing eyes in the luggage compartment			
		- For the Golf Estate, T-Roc, T-Roc Cabriolet, for raised luggage compartment floor	1K9-065-111		
		- For the Touran 5-seater	1T0-065-110		
		- For the Touran 7-seater, Touareg	1T0-065-111		
		- For the Arteon, Arteon Shooting Brake, Passat	3C5-065-110		
		- For the Golf Estate, Golf Alltrack, Passat, Passat Estate, Passat Alltrack	3C9-065-110		
		- For the Polo, T-Cross, T-Roc, Golf, Golf GTI, Golf Sportsvan, Tiguan, Tiguan Allspace, ID.3, ID.4, ID. Buzz	5N0-065-111		
<b>Comfort</b>	36	<b>Cool and thermos box</b>	000-065-400-F		
	36	<b>Waste container</b> for drink holder in the centre console	000-061-142		
	36	<b>"Clean Solution" waste bag</b> , including 2 rolls of waste bags	000-061-107		
	37	<b>LED reading light</b> , with swan neck, powered by the 12 V vehicle socket	000-069-690-G		
	37	<b>Cruise control system</b> <sup>1</sup>	depending on the model		
	38	<b>Modular travel and convenience system</b>			
		- Base module <sup>2</sup>	000-061-122		
		- Folding table with drink holder <sup>2</sup>	000-061-124		
		- Clothes hanger <sup>2</sup>	000-061-127-B		
		- Bag hook <sup>2</sup>	000-061-126-B		
		- Action camera holder <sup>2</sup>	000-061-125-J		
		- Tablet holder for iPad 2-4 <sup>2,3</sup>	000-061-125-A		
		- Tablet holder for iPad Air 1-2 <sup>2,3</sup>	000-061-125-E		
		- Tablet holder for iPad mini 1-3 <sup>2,3</sup>	000-061-125-B		
	- Tablet holder for Samsung Galaxy Tab 3/4 10.1 <sup>2,3</sup>	000-061-125-D			
		- Universal tablet holder	000-061-125-N		

<sup>1</sup> Contact your Volkswagen dealership for more information on model uses, specifications and pricing.

<sup>2</sup> For all vehicles with headrest struts. Not for module seats.

<sup>3</sup> "iPhone", "iPod", "iPad", "iPad mini", "iPad Air", Apple Lightning and CarPlay are registered trademarks of Apple Inc. Galaxy Tab is a registered trademark of Samsung Electronics Co. Ltd. Android is a registered trademark of Google Inc.

<sup>4</sup> Use marten deterrent spray safely. Always read the label and product information before use.

# Comfort and Protection

Heading	Page	Article name	Article number	Price
<b>Child seats and accessories</b>	not shown	<b>Seat cover</b> with long back section	000-019-819-C	
	40	<b>"Flex Base i-SENSE"</b>	11A-019-907	
	40	<b>Infant carrier "i-SIZE"</b>	11A-019-900	
	41	<b>"Dualfix i-SIZE"</b>	11A-019-902	
	41	<b>"TRIFIX i-SIZE"</b>	11A-019-909	
	41	<b>"KIDFIX i-SIZE"</b>	11A-019-906	
	41	<b>"KIDFIX i-SIZE" GTI</b>	5HV-019-906	
<b>Care and cleaning</b>	not shown	<b>Cockpit and plastic cleaner</b> , pump bottle, 500 ml	000-096-307-G	
	not shown	<b>Wheel rim cleaner</b> , gel, pump bottle 500 ml	000-096-304-J	
	not shown	<b>Carpet and upholstery cleaner</b> , pump bottle 500 ml	000-096-301-B	
	not shown	<b>Insect remover</b> , pump bottle 500 ml	000-096-300-B	
	not shown	<b>Soft leather cleaner</b> , 250 ml	000-096-323-J	
	not shown	<b>Window cleaner concentrate</b> , 250 ml dispenser bottle	000-096-311-M	
	not shown	<b>Chrome and aluminium care product</b> , 250 ml	000-096-319-D	
	not shown	<b>Summer ready-to-use window cleaner</b> , canister 3,000 ml	000-096-321-B	
	not shown	<b>Winter care kit</b> : 1 anti-frost concentrate (500 ml), 1 de-icer (500 ml), 1 rubber treatment (75 ml), 1 ice scraper	000-096-352-L	
	not shown	<b>Spring care kit</b> : 1 cockpit and plastic cleaner (500 ml), 1 insect remover (500 ml), 1 wheel rim cleaner (500 ml), 1 wheel brush, 1 microfibre cloth	000-096-355-D	
	not shown	<b>Sponge care kit</b> : 1 insect removal sponge, 1 universal sponge, 1 car sponge, 1 window cloth	000-096-166-A	
	not shown	<b>De-icer</b> , pump bottle 500 ml	000-096-322-F	
	not shown	<b>Rubber care product</b> , care stick, 75 ml	000-096-310-E	
	not shown	<b>Anti-frost concentrate</b> , to -70 °C, 500 ml bottle	000-096-320-GJ	
	not shown	<b>Hand sanitiser</b> , spray bottle, 36.5 ml	000-093-104	
not shown	<b>Refill bottle for hand sanitiser</b> , 200 ml	000-093-104-A		

This table shows the available options with the individual products and our current vehicle models.  
Please contact your Volkswagen dealership for more information about whether the options can be installed on your particular vehicle.  
The specified fitting times are guidelines, 100 TU (time units) correspond to one hour. Valid from January 2023.

# Product Overview **Comfort and Protection**

Heading	Page	Article name	Article number	Price
	43	<b>2-in-1 display cleaner</b> , refillable		
		- Colour: Dark blue	000-096-311-AD-530	
		- Colour: Yellow	000-096-311-AD-655	
		- Colour: Light grey	000-096-311-AD-573	
		- Colour: Pink	000-096-311-AD-L19	
		- Colour: Turquoise	000-096-311-AD-3H1	
	not shown	<b>Refill pouch for 2-in-1 display cleaner</b> , 200 ml	000-096-311-AE	
<b>Service</b>	42	<b>First aid kit</b>	6R0-093-108	
	42	<b>"Evolution" emergency hammer</b>	000-093-101-B	
	42	<b>Ice scraper</b>		
		- Telescopic handle	000-096-010	
		- Snow brush	000-096-010-A	
	42	<b>Warning triangle</b>	000-093-055-AA	
	42	<b>Breakdown assistance safety package</b>	000-093-059-M	
	42	<b>Fire extinguisher</b> , 1 kg extinguishing agent	000-016-995	
	42	<b>Holder for fire extinguisher</b> , fits in the footwell, for 1-kg container	000-016-997	
	42	<b>High-visibility waistcoat</b> , colour: Orange	000-093-056-H -FSX	

<sup>1</sup> Contact your Volkswagen dealership for more information on model uses, specifications and pricing.

<sup>2</sup> For all vehicles with headrest struts. Not for module seats.

<sup>3</sup> "iPhone", "iPod", "iPad", "iPad mini", "iPad Air", Apple Lightning and CarPlay are registered trademarks of Apple Inc. Galaxy Tab is a registered trademark of Samsung Electronics Co. Ltd. Android is a registered trademark of Google Inc.

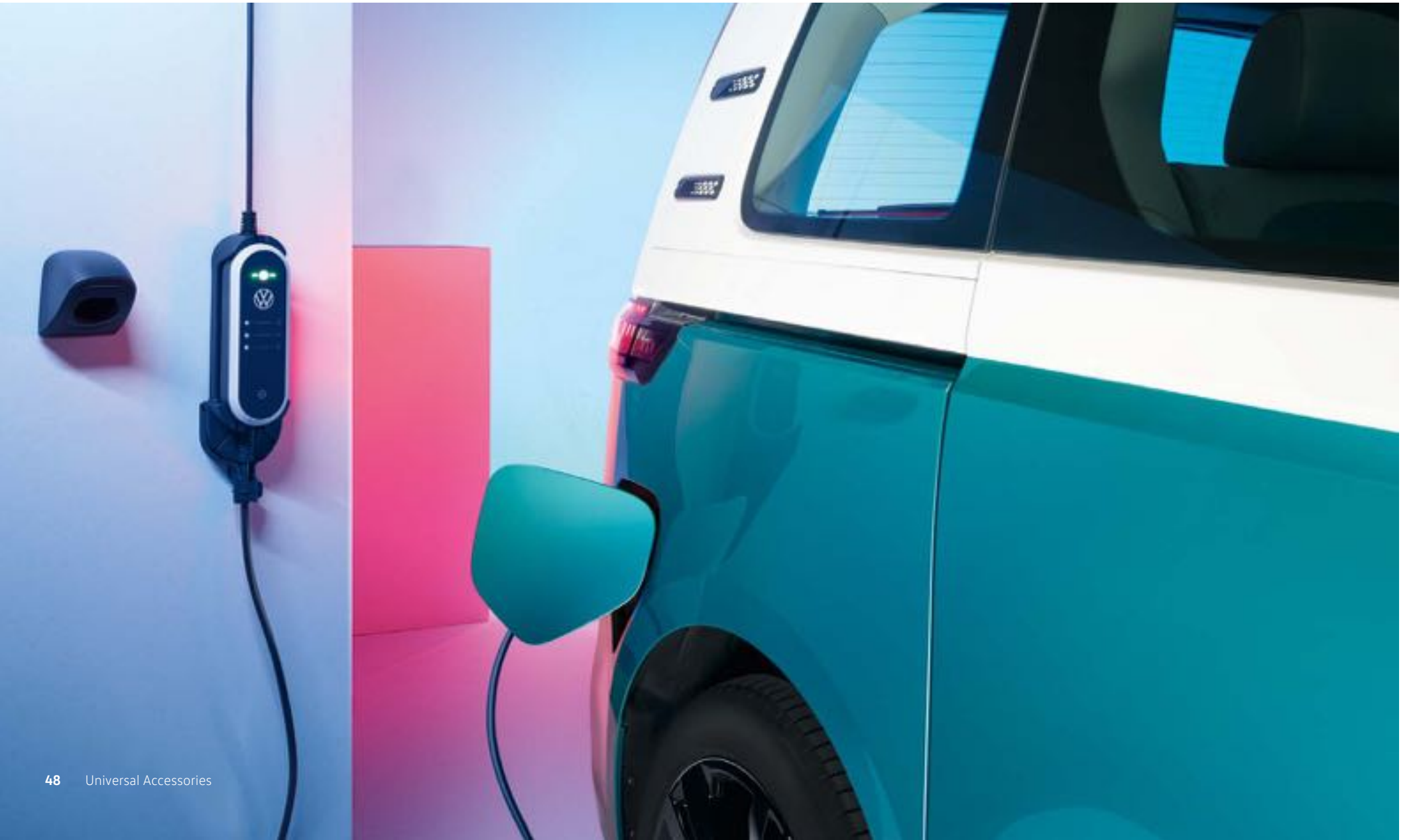
<sup>4</sup> Use marten deterrent spray safely. Always read the label and product information before use.

# Comfort and Protection

Heading	Page	Article name	Article number	Price
<b>Vermin repellent</b>	not shown	<b>Vermin repellent spray<sup>4</sup></b> , creates an unpleasant smell for vermin, use every 4-6 weeks	000-054-780-A	
	not shown	<b>Ultrasonic protection</b> , devices that produce unpleasant ultrasonic sounds for rodents		
		- M2700, for fixed installation, waterproof, approx. fitting time 25 TU	000-054-651-A	
		- M8700, mobile device, battery-powered, waterproof, approx. fitting time 5 TU	000-054-650-E	
		- M7500, for fixed installation, ultrasonic sounds also can be heard outside of the engine compartment as they resonate against the bonnet, fitting time approx. 25 TU	000-054-650-H	
	not shown	<b>Ultrasonic protection and high-voltage</b> , generates both ultrasonic sounds and high voltage deterrents		
		- M4700, 1 x ultrasonic and 6 high-voltage plates, for small engine compartments, fitting time approx. 100 TU	000-054-650-F	
		- M5700N, 6 x ultrasonic and 6 flexible high-voltage plates, for wide engine compartments and SUVs, fitting time approx. 50 TU	000-054-650-G	
		- M4700B, with +/- high-voltage brushes for transmitting power through the insulating fur, fitting time approx. 100 TU	000-054-650-J	
		- M9700, with ultrasonic and high-voltage, revolutionary multi-contact high-voltage brush system, waterproof, battery-powered with battery display	000-054-650-K	
	- M9900, with ultrasonic and high-voltage, revolutionary multi-contact high-voltage brush system, innovative energy management thanks to "Sleep mode", waterproof, battery-powered with battery display	000-054-650-N		

This table shows the available options with the individual products and our current vehicle models.  
Please contact your Volkswagen dealership for more information about whether the options can be installed on your particular vehicle.  
The specified fitting times are guidelines, 100 TU (time units) correspond to one hour. Valid from January 2023.

# Charging





# Charging

**01-03** Do you want to be flexible when it comes to charging – wherever you happen to be? Then, the intelligent Volkswagen Genuine charging system **ID. Charger Travel** (01) is just the right product for you. The ID. Charger Travel is a control unit that works like a mobile wall box. It lets you charge with the same power that you get from a wall box. It detects the adapter plug connected and thus regulates the maximum permitted current rating, among other things, depending on the available power and the maximum current rating set in the vehicle<sup>1</sup>. There are various optional **charging connectors** (02) to fit the ID. Charger Travel. So now you're well equipped, even when driving abroad. The custom-fit **wall bracket set** (03) provides a permanent and secure location in your garage or carport.

**04-05** An ideal product when out and about. The practical **Volkswagen Genuine emergency charging cable** (04) including storage bag lets you simply charge your electric vehicle on a normal household socket even without a charging station<sup>2</sup>. This lets you continue your journey to the nearest charging station. The use of a wall box is recommended to fully charge your vehicle overnight at home. Use the handy **folding box** (05) to conveniently transport the ID. Charger Travel, the necessary charging connectors or also the emergency charging cable in your luggage compartment.



**NOTE**  
An overview of all mains cables can be found on page 50.



**NOTE**  
All Comfort and Protection products for ID. vehicles, such as the M9900 vermin repellent, can be found in the universal accessories section from page 34 onwards.

<sup>1</sup> Please note the values and information in your service wallet regarding charging.  
<sup>2</sup> The socket needs to be in perfect technical working order and have been professionally installed.

# Product Overview **Charging**

Heading	Page	Article name	Article number	Price
Charging	49	<b>ID. Charger Travel Base</b>		
		- Charging power of up to 11 kWh, three-phase	000-054-412-AH	
		- Charging power of up to 7.2 kWh, single-phase	000-054-412-AJ	
	49	<b>Wall bracket set for the ID. Charger Travel Base</b> , for 7.2 kW and 11 kW	000-054-410-M	
	not shown	<b>Wall bracket</b> , for type 2 connector		
		- With no metal clamp	000-054-410-P	
		- With metal clamp	000-054-410-N	
	49	<b>Charging connector / Mains cable</b>		
		- Type CEE 1-phase/16 A for connection to the ID. Charger Travel, length 1.65 m	000-054-412-AA	
		- Type CEE 1-phase/32 A for connection to the ID. Charger Travel, length 1.65 m	000-054-412-AB	
		- Type CEE 3-phase/16 A for connection to the ID. Charger Travel, length 1.65 m	000-054-412-AC	
		- Type CEE 3-phase/32 A for connection to the ID. Charger Travel, length 1.65 m	000-054-412-AD	
		- Type E/F for connection to the ID. Charger Travel, MO9B connector, length 1.60 m	000-054-412-AE	
		- Type G for connection to the ID. Charger Travel, BP1 connector, length 1.60 m	000-054-412-AF	
		- Type L for connection to the ID. Charger Travel, MO9I-16 connector, length 1.60 m	000-054-412-AG	

<sup>1</sup> Contact your Volkswagen dealership for information on more country-specific versions.

<sup>2</sup> Emergency charging cables can be used on all Volkswagen electric vehicles. Please contact your Volkswagen dealership for further information about other electric mobility products for your vehicle.

This table shows the available options with the individual products and our current vehicle models. Please contact your Volkswagen dealership for more information about whether the options can be installed on your particular vehicle. The specified fitting times are guidelines, 100 TU (time units) correspond to one hour. Valid from January 2023.

# Charging

Heading	Page	Article name	Article number	Price
	49	<b>Emergency charging cable</b> <sup>1,2</sup>		
		- Mode 2, 230 V 1 AC, max. 2.3 kW, EU	000-054-412	
		- Mode 3, 230/400 V 3 NAC, max. 22 kW, EU	000-054-412-S	
		- Mode 3, 230/400 V 3 NAC, max. 13.8 kW, EU, 6 m	000-054-412-R	
		- Mode 3 XL, 230/400 V 2 AC, max. 13.8 kW, 10 m	000-054-412-T	
	49	<b>Folding box</b> for electric charging cable	000-054-410-A	

This table shows the available options with the individual products and our current vehicle models.  
 Please contact your Volkswagen dealership for more information about whether the options can be installed on your particular vehicle.  
 The specified fitting times are guidelines, 100 TU (time units) correspond to one hour. Valid from January 2023.

# Wheels





01



02



03

**01-05** Personalise your Volkswagen down to the smallest detail with the **Volkswagen Genuine valve cap set** (01) for aluminium or rubber/brass valves. Use the **Volkswagen Genuine wheel bolt locking set** (02) to secure your valuable alloy wheels and prevent theft. The **Volkswagen Genuine Original tyre bag set** (03) helps to protect your Volkswagen's high-grade wheels. The set comes in a range of versions for different tyre sizes. Keep a real grip on things. Even in wintry conditions. **Volkswagen Genuine "Snox" snow chains<sup>1</sup>** (04) and **Volkswagen Genuine "Servo SUV" and "Servo 9" snow chains<sup>1</sup>** (05) features an innovative securing and an automatic tensioning function. So you can reach your destination even on snowy roads.



04



05



<sup>1</sup> Please enquire at your Volkswagen dealership whether the options can be installed on your particular vehicle.





**01-04** Yet another highlight for your Volkswagen.  
**Volkswagen Genuine dynamic hubcaps** (01) impress with their dynamic spinning function and ensure that the logo is always positioned correctly while driving and in any parked position. Also available with GTI (02) and R logo (03), and for ID. models (04).

# Accessories for **wheels**

Heading	Page	Article name	Article number	Price	
Wheel accessories	53	<b>Valve cap set<sup>1</sup></b> , 1 set = 4x			
		- With the Volkswagen logo for aluminium valves, featuring the VW logo, silver/black	000-071-215-E		
			- With the Volkswagen logo for rubber/brass valves, featuring the VW logo, silver/black	000-071-215-D	
	53	<b>Wheel bolt locking set</b> , black, 1 set = 4x			
		- Universal, not for the ID.3, ID.4, up!, e-up!, Sharan, Touareg	000-071-597-D		
		- For the up! and e-up!	000-071-595		
		- For the ID.3 and ID.4	3CN-071-597		
	53	<b>Tyre bag set</b> , 1 set = 4x			
		- For wheels up to 18 inches	000-073-900		
			- For wheels up to approx. 21 inches	000-073-900-E	
	55	<b>Dynamic hub caps<sup>2</sup></b> , 1 set = 4x			
		- With the old Volkswagen logo	000-071-213-C		
- With the Volkswagen logo		000-071-213-D			
- With the Volkswagen logo for the ID. family, colour: White		10A-071-213			
- With the GTI logo		000-071-213-E			
		- With the R logo	000-071-213-F		

<sup>1</sup> Please contact your Volkswagen dealership for more information about whether the options can be installed on your particular vehicle.

<sup>2</sup> The use of the dynamic hub cap depends on the wheel. Please ask your Volkswagen dealership.

<sup>3</sup> Use of the snow chains depends on the wheel. Please ask your Volkswagen dealership.

This table shows the available options with the individual products and our current vehicle models. Please contact your Volkswagen dealership for more information about whether the options can be installed on your particular vehicle. The specified fitting times are guidelines, 100 TU (time units) correspond to one hour. Valid from January 2023.



Heading	Page	Article name	Article number	Price	
Snow chains	53	<b>"Snox" snow chain<sup>3</sup></b> , 1 set = 2x			
		- For tyre sizes from 165/70 R14 to 195/45 R15	000-091-387-BE		
		- For tyre sizes from 185/60 R14 to 185/55 R15	000-091-387-BF		
		- For tyre sizes from 195/60 R14 to 205/45 R16	000-091-387-BG		
		- For tyre sizes from 195/70 R15 to 215/45 R17	000-091-387-BH		
			- For tyre sizes from 215/60 R16 to 225/45 R18	000-091-387-BJ	
	53	<b>"Servo SUV" snow chain<sup>3</sup></b> , 1 set = 2x			
		- For tyre size 215/65 R17	000-091-387-AG		
		- For tyre size 235/70 R17	000-091-387-BB		
			- For tyre sizes 255/60 R18 and 255/55 R19	000-091-387-BC	
	53	<b>Servo 9 snow chain<sup>3</sup></b> , 1 set = 2x			
		- For tyre sizes 185/65 R15 and 185/60 R16	000-091-387-BA		
		- For tyre size 205/60 R16	000-091-387-BD		
		- For tyre sizes 215/55 R17 and 215/60 R16	000-091-387-AT		
		- For tyre sizes 215/55 R18 and 215/50 R19	000-091-387-BK		
		- For tyre sizes 235/55 R19 to 255/50 R19	000-091-387-BN		

This table shows the available options with the individual products and our current vehicle models.  
Please contact your Volkswagen dealership for more information about whether the options can be installed on your particular vehicle.  
The specified fitting times are guidelines, 100 TU (time units) correspond to one hour. Valid from January 2023.



# Mobile and flexible

## Simply online

Experience the entire world of Volkswagen Accessories online – whenever and wherever you like. Find out about our products, hear the latest news first through social media, or conveniently browse through our world of accessories. Have fun!



**YouTube** – the official Volkswagen channel with a vast range of fun and informative videos, covering both your Volkswagen and the Genuine Accessories range. [www.youtube.de/myvolkswagen](https://www.youtube.de/myvolkswagen)



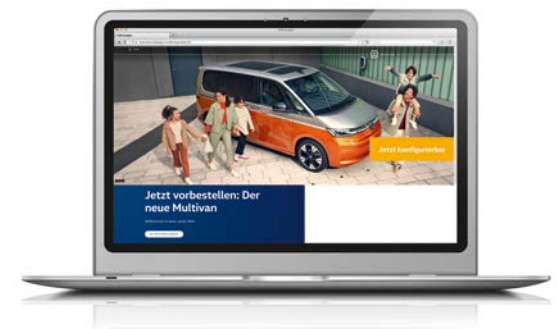
We'll stay in touch and show you what we like. News, opinions, photos, videos, friends, fans. [facebook.com/VolkswagenDE](https://facebook.com/VolkswagenDE)



Visit us online at [instagram.com/volkswagen\\_de](https://instagram.com/volkswagen_de)



Visit our website at [volkswagen.de](https://volkswagen.de)



# **Accessories** for the ID. Buzz

**Volkswagen Zubehör GmbH · Dreieich · volkswagen.de**  
**Subject to change and errors · April 2023**

The offers with regard to scope of delivery, appearance, performance, dimensions, weights and pictures, and all information relating to fittings and technical data, correspond to the knowledge available at the date of catalogue production. We reserve the right to make changes to the scope of delivery, design and colour without advance notification within the context of further development.

**Your Volkswagen dealership**